



PINELLAS COUNTY MANATEE PROTECTION ZONES

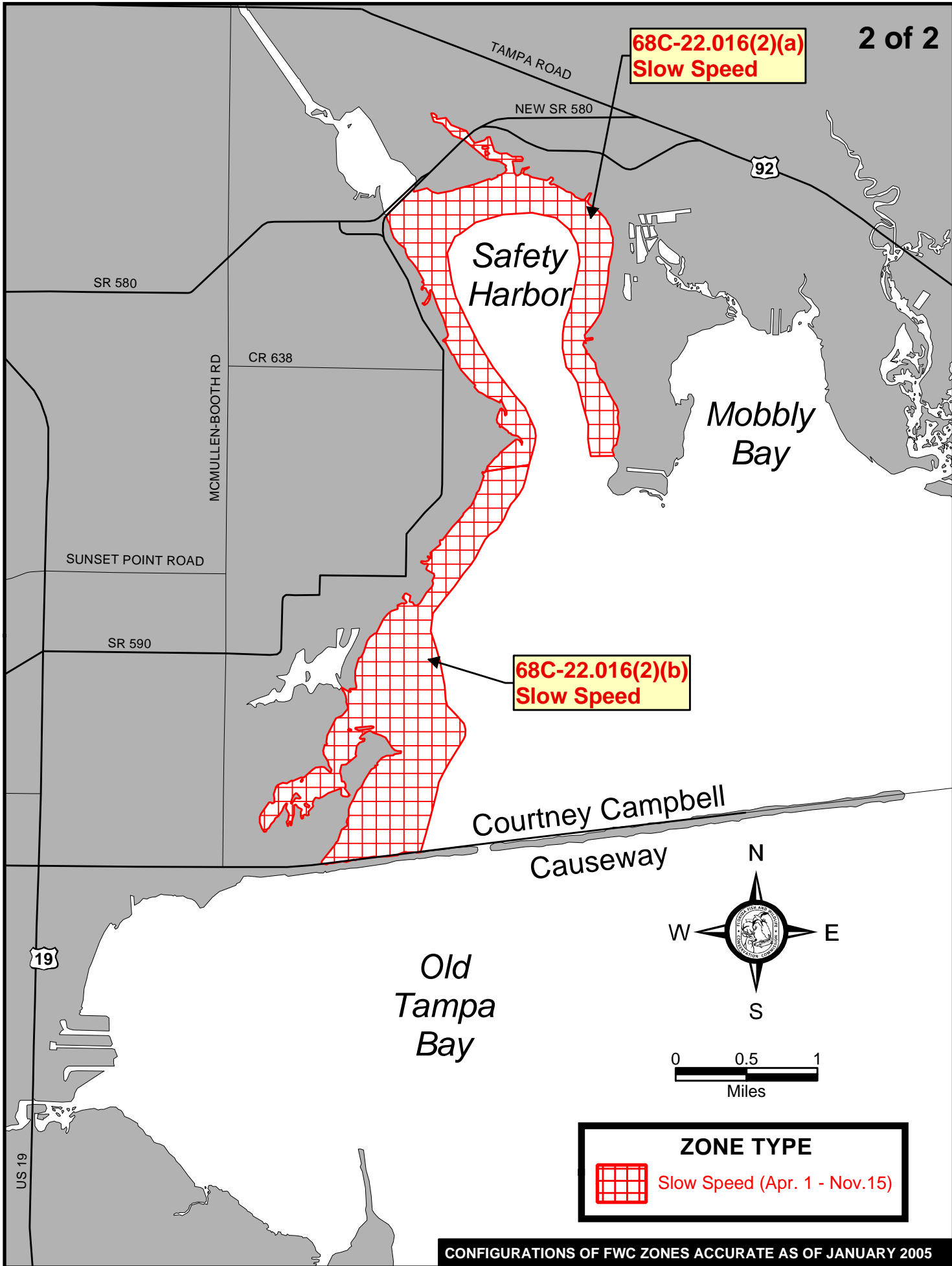
**68C-22.016 F.A.C.
JANUARY 2005**

For information please call or write to:
Fish and Wildlife Conservation Commission
Division of Habitat and Species Conservation
Imperiled Species Management Section
620 South Meridian Street - Mail Station 6A
Tallahassee, FL 32399-1600
PHONE (850) 922-4330 FAX (850) 922-4338 SUNCOM: 292-4330

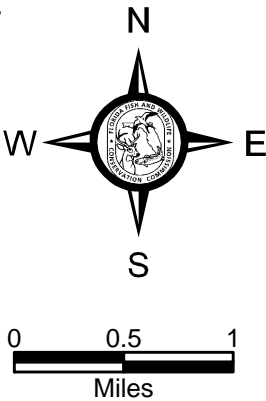
ZONE TYPE LEGEND

 **SLOW SPEED (April 1 - November 15)**


68C-22.016(2)(a)
Slow Speed



68C-22.016(2)(b)
Slow Speed



ZONE TYPE

 Slow Speed (Apr. 1 - Nov.15)